



SHA TIN
COLLEGE

SCHOOL PROFILE

2024
2025



CEEB Code: 670884 IB Code: 001206 UCAS Code: 47844

3 Lai Wo Lane, Fo Tan, Shatin, Hong Kong

+ (852) 2699 1811

+ (852) 2695 0592

shatincollege.edu.hk

HigherEd@shatincollege.edu.hk

PURPOSE

We challenge our students to make meaningful contributions to the world.



Founded by the
English Schools Foundation in
1982



An **international,
co-educational**
school



1,255
students



32
nationalities



Accredited by the
**International
Baccalaureate (IB)**



135
graduates in
Class of 2024



152
students in current
senior year class



All students are
taught through
English



IBMYP
from Year 7 to 9



**IGCSE/
GCSE**
from Year 10 to 11



**IBDP/
IBCP**
from Year 12 to 13



School Calendar
190 days



Students are
NOT ranked

IB COURSES OFFERED (FOR CLASS OF 2025)

1

HL SL Literature
HL SL Language and Literature

SL Literature and Performance
SL Self-Taught Literature

**Studies in Language
and Literature**

2

HL SL Mandarin
HL SL French

SL Ab Initio Language

**Language
Acquisition**

3

HL SL Business Management
HL SL Economics
SL Environmental Systems and Societies
HL SL Geography

HL SL History
HL SL Philosophy
HL SL Psychology

**Individuals
and Societies**

4

HL SL Biology
HL SL Chemistry
SL Environmental Systems and Societies
HL SL Design Technology

HL SL Computer Science
SL Food and Technology
HL SL Physics
HL SL Sports, Exercise and Health Science

Sciences

5

HL SL Analysis and Approaches

HL SL Applications and Interpretations

Mathematics

6

HL SL Film Studies
HL SL Music
SL Literature and Performance

HL SL Theatre
HL SL Visual Arts
HL SL Another subject (Group 3 or 4)

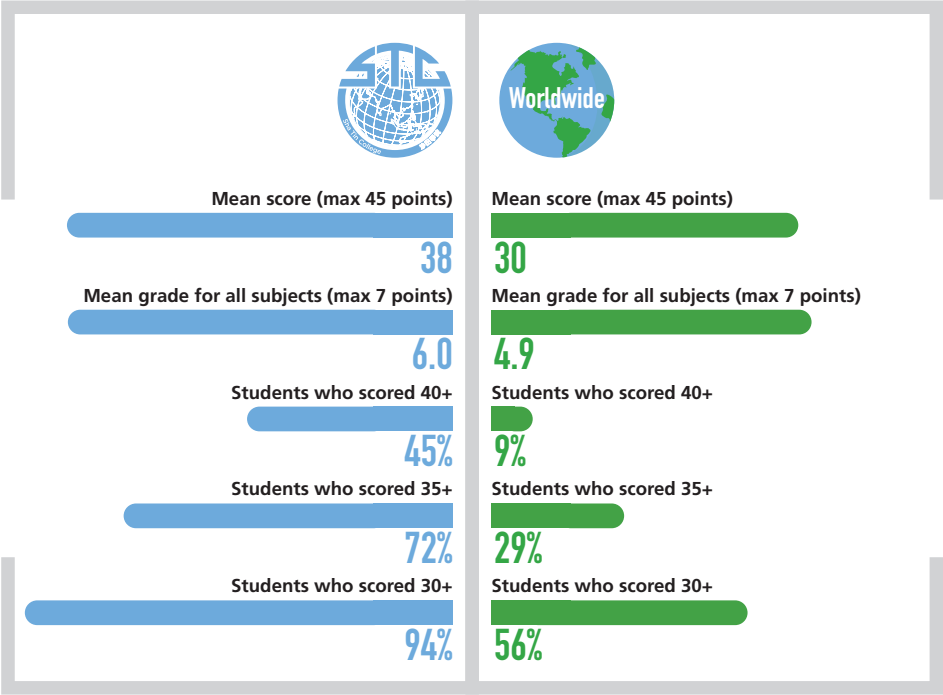
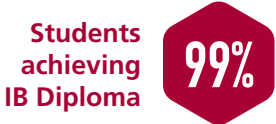
The Arts

Sha Tin College (STC) follows the International Baccalaureate 7-point grade scale: 7 = Excellent 6 = Very Good 5 = Good 4 = Satisfactory 3 = Medium 2 = Poor 1 = Very Poor

IB DIPLOMA RESULTS

(Class of 2024)

Sha Tin College is an inclusive school, catering for students of all abilities.

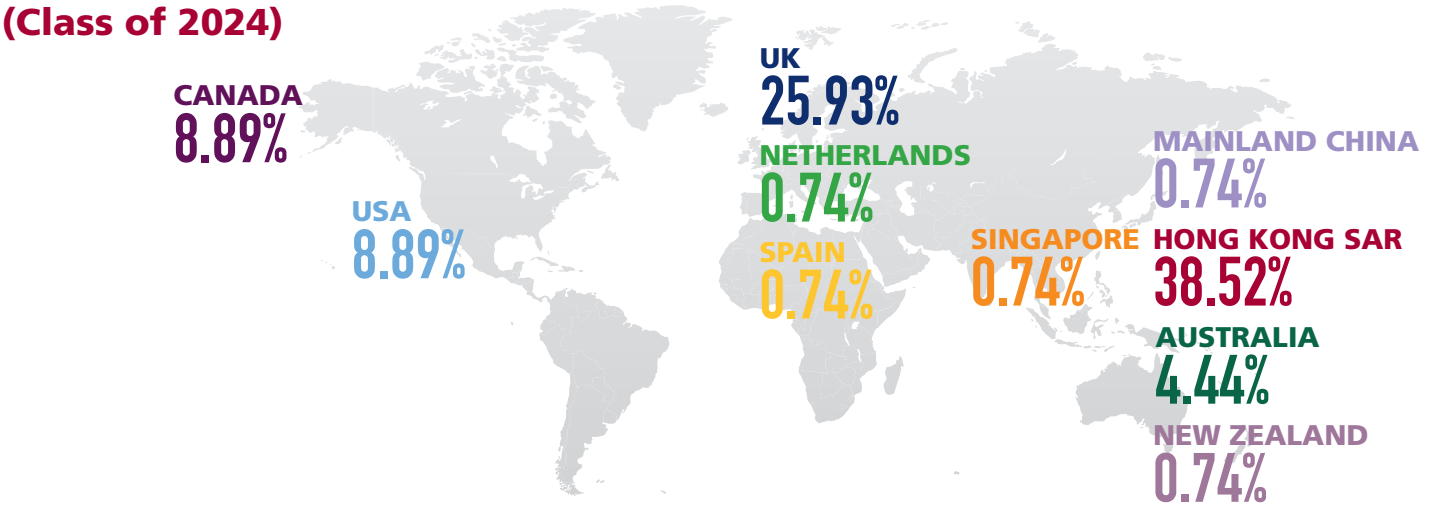


Worldwide data is from the IB Statistical Bulletin (May 2024)

COLLEGE MATRICULATION

(Class of 2024)

DESTINATION MAP (135 STUDENTS)



AUSTRALIA (6)
Applying (5)
University of Melbourne (1)

CANADA (12)
Queen's University (1)
Simon Fraser University (1)
The University of British Columbia (2)
University of Alberta (1)
University of Toronto (5)
University of Waterloo (2)

HONG KONG SAR (52)
Hong Kong Baptist University (2)
Hong Kong Metropolitan University (1)
The Chinese University of Hong Kong (12)
The Hang Seng University of Hong Kong (1)
The Hong Kong Polytechnic University (5)
The Hong Kong University of Science and Technology (8)
The University of Hong Kong (20)
HKU SPACE (1)
UOW College Hong Kong (1)
VTC Youth College (1)

MAINLAND CHINA (1)
Tsinghua University (1)

NETHERLANDS (1)
Delft University of Technology (1)

NEW ZEALAND (1)
Applying (1)

SINGAPORE (1)
LASALLE College of the Arts (1)

SPAIN (1)
University of Barcelona (1)

THE UNITED KINGDOM (35)
Buckinghamshire New University (2)
Durham University (3)
Imperial College London (2)
King's College London (3)
Royal Veterinary College (1)
St George's, University of London (1)
The Royal Central School of Speech and Drama (1)
The University of Edinburgh (3)
The University of Warwick (1)
University College London (4)
University of Brighton (2)
University of Bristol (1)
University of Exeter (2)
University of Leeds (1)
University of Liverpool (1)
University of Nottingham (3)
University of Oxford (1)
University of Sheffield (1)
University of the Arts London (2)

THE UNITED STATES OF AMERICA (12)
Brown University (1)
Georgia Institute of Technology (1)
Indiana University Bloomington (1)
Northwestern University (1)
Pomona College (1)
The University of Chicago (1)
University of California, Los Angeles (1)
University of Florida (1)
University of Illinois Urbana-Champaign (1)
University of Michigan (1)
University of Pennsylvania (1)
University of Southern California (1)

GAP YEAR (13)